

# POLYMER & RUBBER ANALYSIS

**ANALYSIS OF POLYMERS, PLASTICS, RUBBER, TOYS ETC.**



## POLYMER & RUBBER ANALYSIS

Polymers, Rubber and Leather play an important role in the lives of virtually everyone.

The assurance of the safety, quality, and reliability of your products requires that you monitor every step of the development and manufacturing process.

Our team of chemists carry a wide variety of experience in the leather, textile, rubber and polymer industry including specific expertise in base polymers, rubber, cured elastomers, composite materials, polymer additives and compounding ingredients.

**1**

### RELIABLE

Allele Life Sciences is committed for reliable data in your project

**2**

### FAST TURNAROUND

Our experienced team will deliver all projects in fast turnaround

**3**

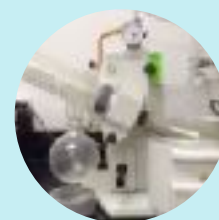
### AFFORDABLE

Allele Life Sciences is committed to provide affordable services

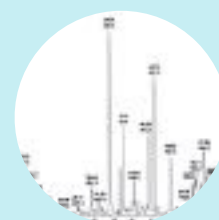
#### Analysis



#### Element Analysis



#### GC-MS Analysis



#### LC-MS Analysis

#### Polymer Analysis

#### Leather Testing

## **POLYMER & PLASTIC ANALYSIS**

- Compositional analysis
- Quality Analysis of Polymer & Plastics
- Chemical Analysis
- Characterisation of Material
- Research and Development Projects
- Polymer Testing Laboratory Setup Consultancy



## **RUBBER TESTING & ANALYSIS**

Rubber compounds are difficult to analyse. The rubber may contain a variety of additives including other polymers, which are used to enhance the properties of the rubber matrix. We employ a comprehensive array of analytical methods and wet chemistry techniques to present accurate and intensive rubber testing results.

- Extraction of extractive parts from the mixture
- Sulphur content determination
- Identification of polymers' type and their qualification,
- Determination of carbon black content
- Identification and qualification of inorganic mixture' components
- Identification of accelerators and antidegradants
- Identification of reinforcing materials
- Other Testing - Melting Point, Ash, Refractive Index, Viscosity, Acid Number, PRI etc.

## **LEATHER TESTING & ANALYSIS**

Leather Verification || Species Testing || Biochemistry and microbiology testing || Comprehensive analysis || Fastness tests || Examination by Microscopy || Identification of additives or contaminants || Individual chemical tests || Flammability tests || Physical tests

## **TECHNOLOGIES AND FACILITIES**

Analysis by GC-MS-MS, Triple Quadrupole, Gas Chromatograph ( FID, FPD and NPD Detectors ), Analysis by LC-MS-MS, Analysis by HPLC - PDA, FLD Detectors, UV-Visible spectrophotometer, ELISA, PCR & Real Time PCR, Sequencing, Ion Meters, RI Detector, Flash Point Apparatus etc.

### **Quotation & Ordering :**

For quotation request mail at : [mail@allelelifesciences.com](mailto:mail@allelelifesciences.com) or  
Call - + 91 - 9891179928

# SAMPLE SUBMISSION FORM

## CUSTOMER INFORMATION

Name :

Address :

Phone :

E.mail :

## SAMPLE INFORMATION

#	Analysis Required	Sample Information	No. of Samples	MSDS
				Y/N

## ANALYSIS INSTRUCTION

## AUTHORIZATION SIGNATURE

## DATE

For Office Use Only	Comment	
Received By		Date
Forwarded to		Date

## MSDS QUESTIONNAIRE

<b>Description of Sample(s):</b>	
<b>Material Composition/List of Ingredients?</b>	
<b>Is License required to handle sample?</b>	
<b>Is the sample a Biological Agent?</b>	
<b>Is Sample Radioactive?</b>	
<b>Physical Characteristics?</b>	
<b>Hazard/Transportation Labels?</b>	
<b>Does your Institution specify any specific Personal Protective Equipment (PPE) to your staff for handling sample(s)?</b>	
<b>Does your company specify any specific Sample Containment?</b>	
<b>Does your company specify any specific Sample Containment?</b>	

### OTHER INSTRUCTION