

TRAINING IN PHARMACOGNOSY

Ist Week - Basics of Herbal Analysis Lab & Analytical Procedures

Unit 1: Lab safety and Analytical Procedures , Chemical & Reagent Preparation

Unit 2: Soxhlet Extraction, Drying the solvent by Vacuum Rotary Evaporator

Unit 3: Qualitative assay of Herbals - Assay of Alkaloids, Flavonoids, Terpenes, Glycosides, Free Glucose, tannins, Anthraquinone, Saponins, Phenols etc

Unit 4: Quantitative assay of Total Phenolics

Unit 5: Quantitative assay of Total Flavonoids



IIInd Week - Cell based Assay, MIC & Anti Microbial Assay

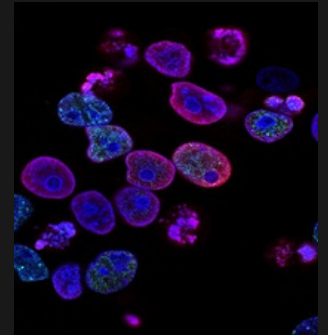
Day 1: Cell Culture Lab Safety, Microscopy, Basics of Cell Culture

Day 2: Culture of a Continuously Growing Cell Line

Day 3: MTT Assay for cytotoxicity analysis

Day 4: Determination of minimum inhibitory concentration

Day 5: Anti-Microbial assay of extracted crude extract (ELISA based)



IIIrd Week - Antioxidant / Oxidative Stress Assay

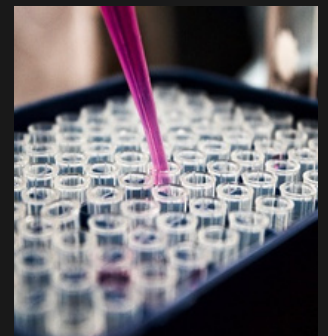
Day 1: Inhibition Concentration (IC50) of Antioxidant activity

Day 2: In vitro radical scavenging assay & data analysis

Day 3: Reducing Power assay of herbal extract

Day 4: Analysis of Catalase test in herbal sample

Day 5: superoxide dismutase (SOD) activity



IVth Week - Chromatography Separation & Analysis

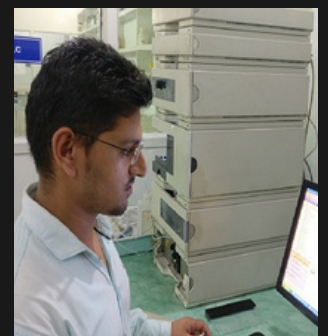
Day 1: Purification of herbal extract by column chromatography

Day 2: Analysis of fractions by TLC

Day 3: Spectrophotometric analysis of crude fraction

Day 4: Basics of High Performance Liquid Chromatography

Day 5: Sample Analysis & Data Analysis of HPLC

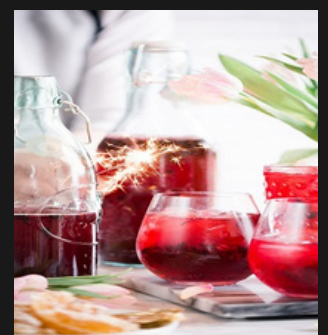


Vth Week - Project Work

We will share our ideas and decide for small piece of research in limited time frame.

Cost of Training : Training Only -INR 10,000 / -
Training + Project - INR 12,000/-

Duration : 80 to 100 Hrs or 4 to 6 Weeks



Email : info@allelelifesciences.com || allelelifesciences@gmail.com

WhatsApp : 9891179928 || 8377082003

Web : www.allelelifesciences.com